

7. HANG REMAINING PANELS

Hang the next panel by connecting the top door bracket to the wheel carrier. Then, align the hinges of the two panels and insert the hinge pins. Adjust the wheel carriers to level by using the enclosed wrench. Repeat this process for all remaining panels.

8. SECURE SIDE FRAMES IF APPLICABLE

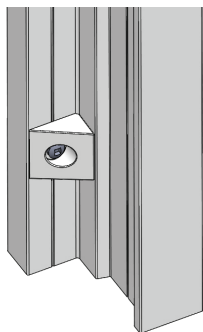
Mount each side frame with the mounting screws provided so that the frames are plumb to the hanging panel. Cover all 3/8" holes with the button plugs.

9. STOP BUMPER

The stop bumper is used to provide tension on one way panels only, so that the panels remain in position when closed. The stop bumper is installed on the side frame against which the panels close opposite the pivot. Locate the bumper approximately one foot down from the top, in the center of the recessed channel on the screw indicator line.

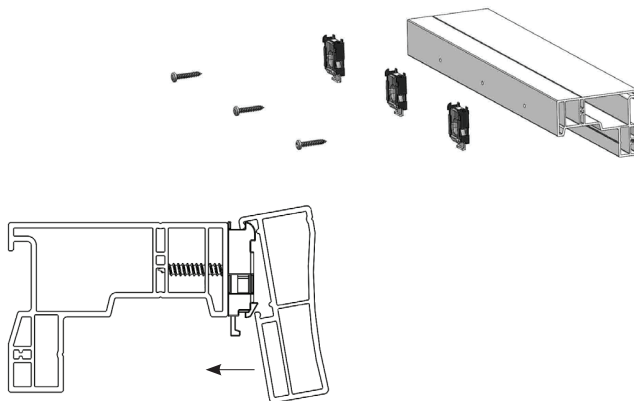
10. BI-FOLD PANEL GUIDES

It will be necessary to apply bi-fold panel guides on all one-way close bi-fold track systems with side frames. The panel guides will be applied to the non-pivot side frame. Apply the first panel guide 2" up from the bottom of the frame. The second panel guide is located at the divider rail location or in the center of the side frame. A single #6 x 3/4" screw is used to attach the guides to the frame. The guide sits in the corner against the lightblock as shown below



11. ATTACH VALANCE

Attach valance brackets to the front of the frame using the included #8 x 1" screws, the installation holes should be pre-drilled. Once all brackets are secure, position the channel on the back of the valance so that it rests on the bracket. The valance will need to be on a 45 degree angle, with the bottom of the valance farther into the room. Rotate the valance down to a vertical orientation until locked into all brackets.



12. VALANCE RETURNS

Depending on application, there are two installation methods:

1. If the returns will contact or come too close to the wall, install front valance then attach returns.
2. If there is sufficient room, attach returns to front valance and install as an assembled unit.

If the returns are longer than 2 3/4", then a frame corner key can be used to help locate the return. Glue the corner key into the return, then attach the return to the front valance. To attach, use Loctite 414 and apply a thin line of glue around the walls of the front valance. Position the return against the front valance and hold until dry.



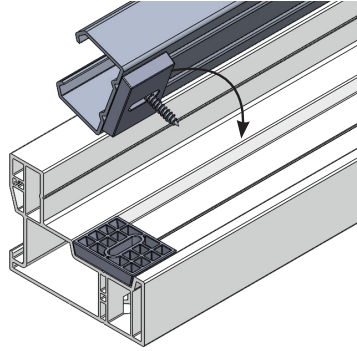
ECLIPSE[®]

SHUTTERS

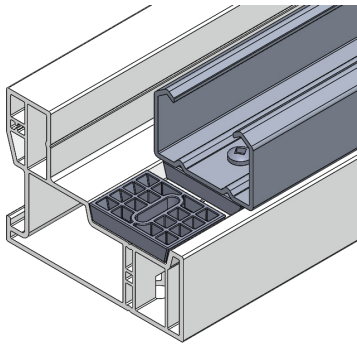
BI-FOLD INSTALLATION INSTRUCTIONS

1. ALUMINUM TRACK

If the tracks are not already attached to the top frame, then mount the tracks to the extreme left of the top frame. Make sure to leave a 1 1/4" space to the left of the track if side frames were ordered. Apply screws through the pre-drilled holes in the track to the extrusion lines on the underside of the top frame. Track Support Spacers should be placed between the track and the frame at every other screw location.



Set spacer on screw



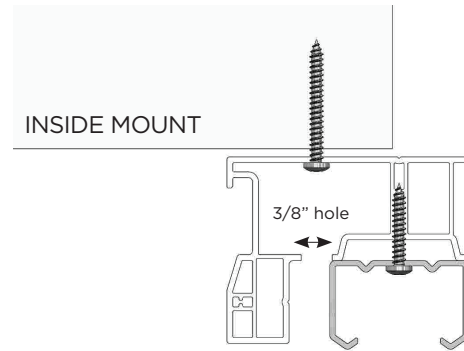
Rotate track onto frame & attach screws

2. WHEEL CARRIERS AND PIVOTS

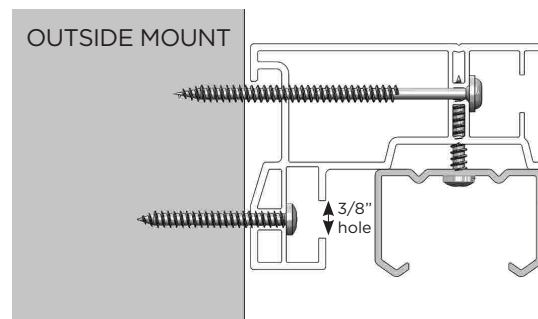
Insert all carriers, then install the top pivot on the stacking side. If the configuration has the panels stacking to both sides of the track, insert the proper number of wheel carriers, then install top pivots at both ends.

3. FRAME ASSEMBLY

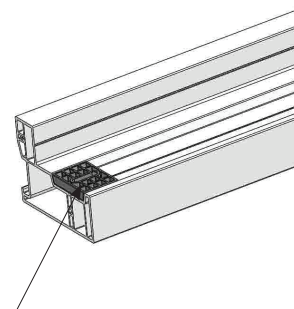
For an inside mount, drill 3/8" holes through the first layer of the body of the frame. Holes are to be drilled every 10" in each frame.



For an outside mount, drill 3/8" holes through the first layer of the frame lightblock at the front edge of the reveal, every 10". (Optional: drill 3/8" holes in the front face of the frame. Set 4" screws (or longer) to securely attach the frame to the opening)

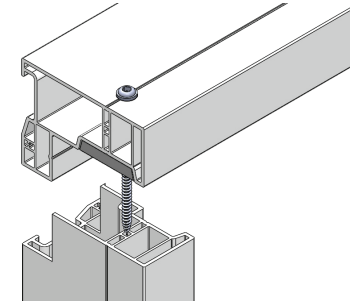


Insert the provided 3" screws through the pre-drilled assembly holes of the top frame. If not already attached, glue track support spacers to the recessed channel at each end of the top frame.



Track support spacer glued to each end of top frame

Line up the screw through the screw ports inside the side frames (fasten tightly).



4. FRAME INSTALLATION

For an **inside** mount, the top frame will be fastened to the opening first and it must be level. Remove every other track screw and replace it with a 3" screw to fasten the frame to the opening. Use shims between the top frame and the opening to level if necessary. For an **outside** mount, set the frame against the wall. Level the top and fasten the top frame to the wall with the provided installation screws. For additional strength, drill 3/8" holes into the front of the frame and set a 4" or longer screw (not provided) through the front of the frame into the opening.

5. MOUNT THE BOTTOM PIVOT

Mount the bottom pivot to the side frame, tight to the floor. The center of the pivot bracket should be in line with indicator line on side frame and the top pivot. Attach to the floor if possible.

6. HANG PIVOTING PANEL(S)

First insert the bottom pin into the bottom pivot bracket. Push the top door plate onto the adjustable nut of the top pivot bracket. Lock the panels in place by rotating the plastic slide around the neck of each adjustable nut. To plumb the panel, loosen the set nut on the top pivot bracket. Move the top of the left panel left or right until plumb then tighten set nut. If needed, move the bottom pivot left or right to make sure panel is plumb and there is a consistent gap between the panel and the side frame.